



A PROJECT BY





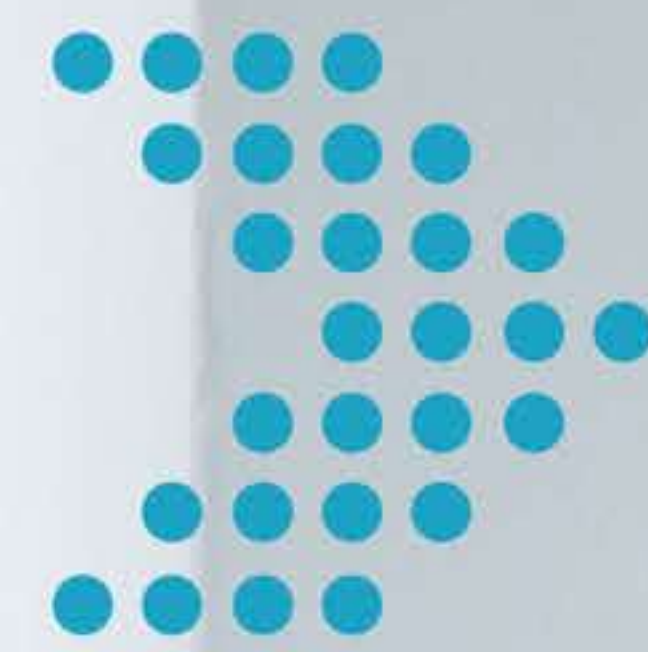
A PROJECT BY





THE AD>ANTAGE OF A BETTER LIFESTYLE.

The experience of an abridge world encircling you.
The experience of being the essence of this world.
The experience of embracing this world and making it your own.
All the experiences in this, one life.



*Disclaimer : This is a creative visualization and not an actual product offering from the company.

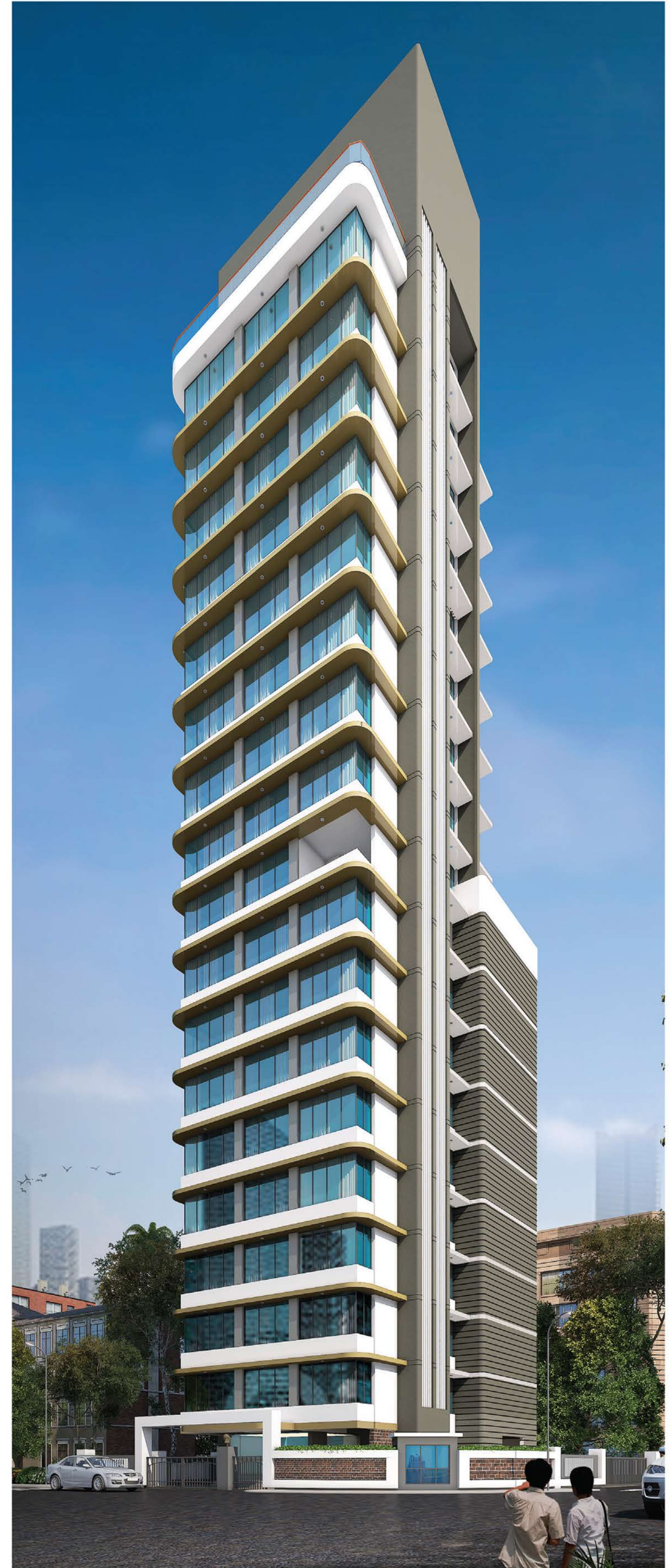
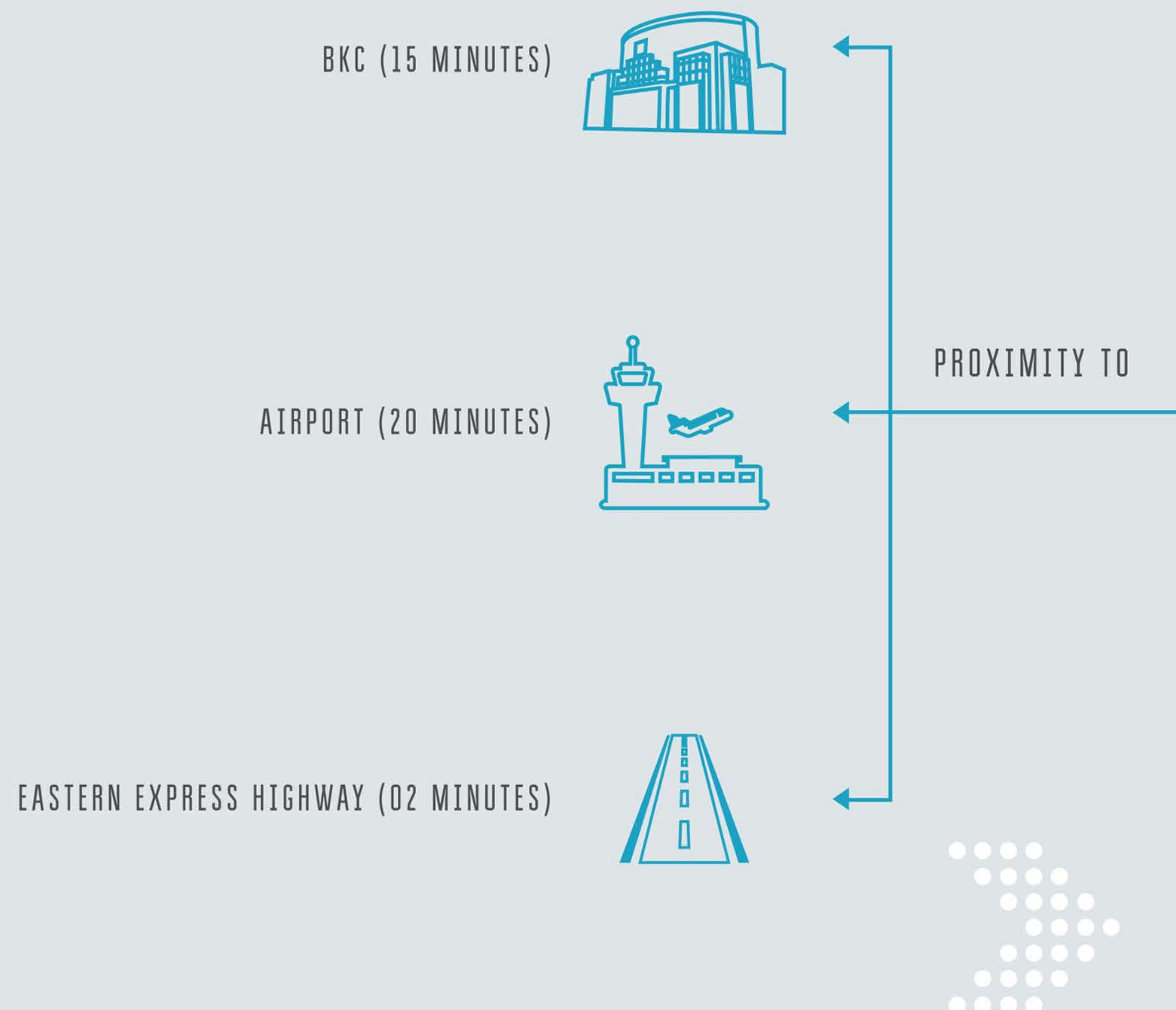


Blending elements of modern Indian structure with contemporary yet timeless design, we bring you Ganesh Niwas; a long awaited answer to a perfectly balanced 21st century living. An 18 storeyed tower of 1 and 2 BHK apartments is grand and unique in its own way.

Ganesh Niwas gives a whole new interpretation to apartment living ensuring that you have a more balanced lifestyle.

YOUR WORLD, SION

Comfort and ease of proximity to important places, all enveloped in one home.





*Disclaimer : This is a creative visualization and not an actual product offering from the company.

THE AD>ANTAGE OF CONVENIENT LIVING.



Your home is close to everything you need.

Ganesh Niwas is the perfect residence for those with a taste for structural excellence of buildings, surrounded by schools and colleges, parks and hospitals, restaurants and movie theatres; located in the prime area, it keeps you close to the city and still away from the hustle and bustle.

FEATURES



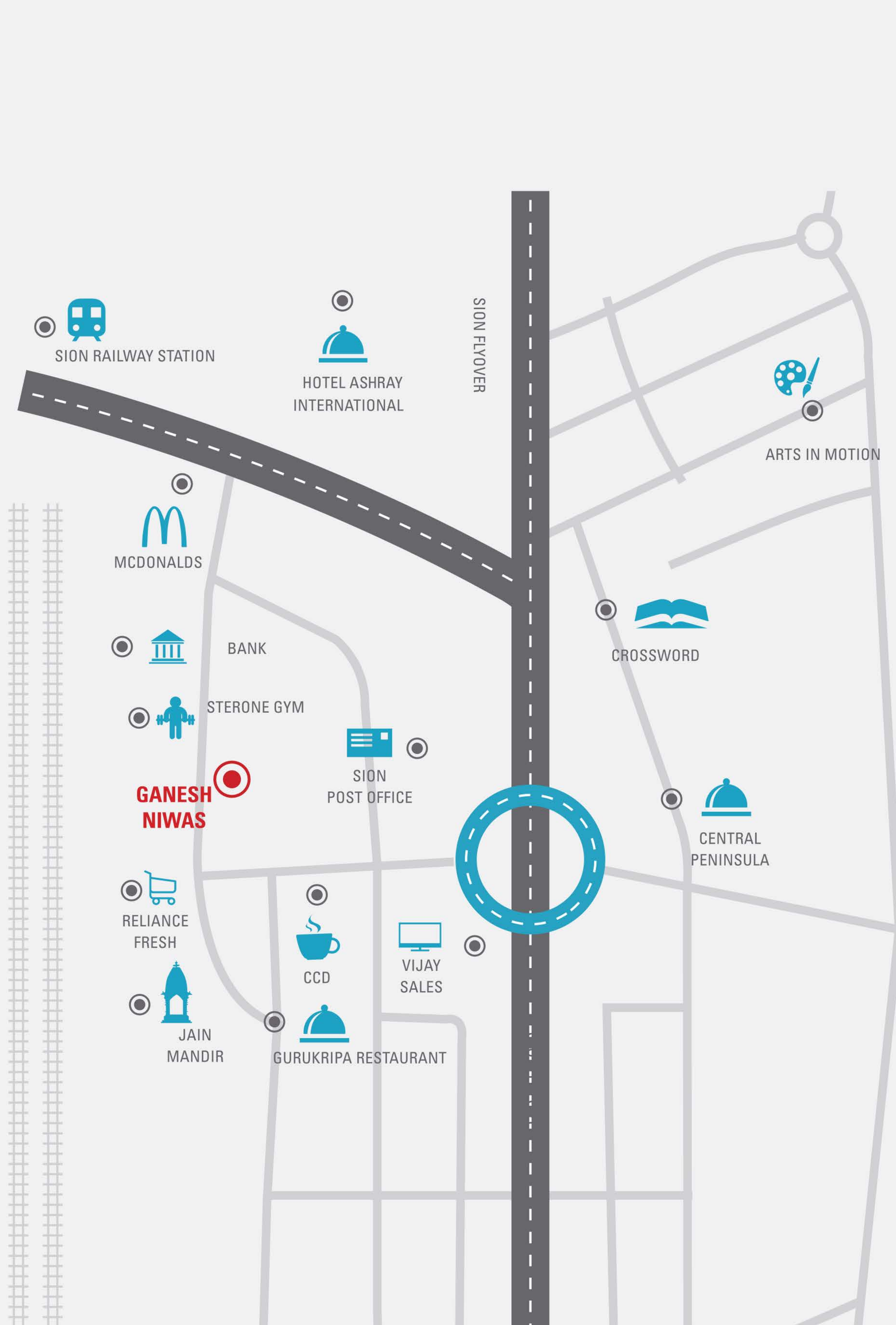
G+18 STOREYED BUILDING

EXQUISITE ENTRANCE LOBBY

CAR TOWER PARKING

CENTRALLY LOCATED

EARTHQUAKE PROOF CONSTRUCTION



| | | |
|---------|-----------------------------|--|
| 1 MIN | CAFE COFFEE DAY TEMPTATIONS | |
| 1 MIN | GURUKRIPA RESTAURANT | |
| 1 MIN | JAIN MANDIR | |
| 1 MIN | SION BUS DEPOT | |
| 1 MIN | RELIANCE FRESH | |
| 2 MIN | BANK | |
| 5 MINS | SIES COLLEGE | |
| 5 MINS | SION RLY. STATION | |
| 5 MINS | MCDONALDS | |
| 6 MINS | PVR CINEMAS | |
| 10 MINS | SIWS SCHOOL | |
| 12 MINS | K J SOMAIYA MEDICAL COLLEGE | |
| 15 MINS | P.D. HINDUJA HOSPITAL | |

THE AD>ANTAGE OF MODERN DESIGN.



We have designed exceptional spaces for living to ensure the quality of living experience is unrivalled anywhere else.
Ganesh Niwas is designed with compact detailing to maximize open space, light and ventilation without compromising privacy.

*Disclaimer : This is a creative visualization and not an actual product offering from the company.





THE AD > ANTAGE OF HAPPY LIFE.



Life is made up of special moments which make it worth living. Each apartment at Ganesh Niwas has a cozy looking living room, a pleasantly crafted kitchen, and a wholesome view of Sion, creating moments to treasure forever.

*Disclaimer : This is a creative visualization and not an actual product offering from the company.

TYPICAL FLOOR PLAN



GANESH NIWAS, SION





1 BHK APARTMENT / 467 SQ. FT (RERA CARPET)

GANESH NIWAS, SION



| 1 BHK | Living Room | Passage | Kitchen | | Bedroom | Bedroom | Bedroom | Toilet 02 | Toilet 02 | Doorjam 01 | Doorjam 02 | Doorjam 01 |
|-----------------------------|---------------|-------------|-------------|-------------|---------------|-------------|-------------|-------------|-------------|-------------|-------------|-------------|
| Dimension | 11.00 X 14.59 | 2.55 X 5.41 | 7.08 X 9.18 | 0.49 X 1.44 | 10.58 X 12.83 | 2.52 X 2.46 | 4.75 X 2.95 | 4.26 X 7.00 | 4.00 X 4.92 | 3.44 X 0.50 | 2.95 X 0.50 | 2.46 X 0.50 |
| | X 1 | X 1 | X 1 | X 1 | X 1 | X 1 | X 1 | X 1 | X 1 | X 1 | X 2 | X 2 |
| Total Carpet Area 452 Sq.ft | 160.49 Sq.ft | 13.80 Sq.ft | 64.99 Sq.ft | 0.70 Sq.ft | 135.74 Sq.ft | 6.20 Sq.ft | 14.01 Sq.ft | 29.82 Sq.ft | 19.68 Sq.ft | 1.72 Sq.ft | 2.95 Sq.ft | 2.46 Sq.ft |



2 BHK APARTMENT / 638 SQ. FT (RERA CARPET)

GANESH NIWAS, SION



| 2 BHK | Living Room | Passage 01 | Passage 02 | Bedroom 01 | Toilet 01 | Bedroom 02 | Passage | Toilet 02 | Kitchen | Doorjam 01 | Doorjam 02 | Doorjam 03 |
|-----------------------------|---------------|-------------|-------------|---------------|-------------|---------------|-------------|-------------|-------------|-------------|-------------|-------------|
| Dimension | 17.19 X 11.48 | 3.44 X 3.38 | 8.06 X 2.95 | 13.25 X 10.00 | 7.58 X 3.67 | 10.20 X 10.33 | 4.26 X 2.95 | 4.26 X 6.89 | 8.95 X 7.12 | 0.50 X 3.44 | 0.50 X 2.95 | 0.50 X 2.46 |
| | X 1 | X 1 | X 1 | X 1 | X 1 | X 1 | X 1 | X 1 | X 1 | X 1 | X 3 | X 2 |
| Total Carpet Area 613 Sq.ft | 197.34 Sq.ft | 11.63 Sq.ft | 23.78 Sq.ft | 132.50 Sq.ft | 27.82 Sq.ft | 105.37 Sq.ft | 12.57 Sq.ft | 29.35 Sq.ft | 63.72 Sq.ft | 1.72 Sq.ft | 4.43 Sq.ft | 2.46 Sq.ft |



Sugee Group is an established and fast growing real estate business, headquartered in Mumbai. Focuses on the redevelopment of housing projects, affordable apartment, second homes and serviced NA plots in Mumbai, Wai, Raigad and other parts of Maharashtra.

Sugee Group understands precisely the dynamics and importance of building homes. Having constructed various residential projects in the heart of Mumbai, the group has grown exponentially towards being a potent force in the real estate industry. Sugee Group has quickly acquired a reputation of being a reliable, trusted and professional realty player and is getting known for before time delivery.

At Sugee, the philosophy of adopting highest standards of integrity ensures that all the transactions and interactions with the buyers and investors are transparent thus enabling Sugee to nurture long-term relationship with the customers, partners and all the stakeholders.

Our Projects, Our Pride. Sugee Group has completed several signature projects across Mumbai.
Here's a brief of our completed, under-construction and upcoming projects.

COMPLETED PROJECTS

| Project Name | Location | Completion |
|--------------------------|-------------------|------------|
| Shraddha Building | Dadar, West | 1986 |
| Anand Vihar | Oshiwara | 1990 |
| Vaibhav Chambers | BKC, Bandra | 2005 |
| Vaibhav Apartments | Dadar, West | 2009 |
| Sugee Heights (Dwarkesh) | Mulund, West | 2011 |
| Shiv Shakti | Mulund, West | 2013 |
| Hiranya | Dadar, West | 2015 |
| Sugee Sadan | Dadar, West | 2017 |
| Sugee Pratham | Dapoli, Ratnagiri | 2017 |
| Sugee Vishwa | Dapoli, Ratnagiri | 2017 |

ONGOING PROJECTS

| Project Name | Location |
|--------------|--------------|
| Trimurti | Shivaji Park |
| Om Sat | Dadar, East |
| Govind Sadan | Dadar, West |
| Preksha | Dadar TT |
| Sanskruiti | Dadar, West |
| Ganesh Niwas | Sion, West |
| Nivaant | Mahabaleswar |
| Mahalaxmi | Hindu Colony |