



SHREE
SHIVANKAR
PROJECT BY ARTH REALTY



Just to be is a blessing.

Just to live is holy.

Life's fine moments are everyday!

Shree Shivankar is a meaningful experience

where easy access to locations

meets a modern construction.

A personal gymnasium meets a fun arcade!

It's where you make life's

finest moments happen everyday.



Get more from life.

This 18-storeyed modern construction consists of 13 habitable floors, with each floor having 4 flats and 2 lifts. The ground and first floor being commercial. With 4 floors for podium ramp parking. Shree Shivankar by Arth Realty is centrally located in Matunga (East). Just minutes away from the Jain Temple, Hindu Temple and Ayyappa Temple.

The perfect place to call home if navigating around this busy city of Mumbai is what your schedules are like. Conveniently get to The Eastern Express Highway, Western Express Highway, Dadar Circle, Tulsi Pipe Road or the Sea Link; or simply the Matunga Railway Station even! Navigate with ease and enjoy the city with family and friends after work by being located in the heart of this city. Get more done in a day and enjoy a Meaningful Living.



A grand, well-lit lobby to welcome you and your guests in style each day. Separate entries for residential and commercial areas.

The best things
in life
come together
at home

The modern architecture conserves traditions of Vastu Shastra having ample movement of natural air and light ensuring energy.

The French windows and the city view of lights sparkling like stars on the floor is a perfect spot for conversations.



Together is a
great place to be

What you are out there in the world is nurtured at home each day. Wake up to a magnificent view with natural light. Great architecture by Arth ensures energy and ventilation keep you from being lazy even though you may really enjoy the view all day.



Your
body is
your
temple

A fully equipped gymnasium space dedicated to meet your basic fitness needs. Get fit as you enjoy the natural light and view.

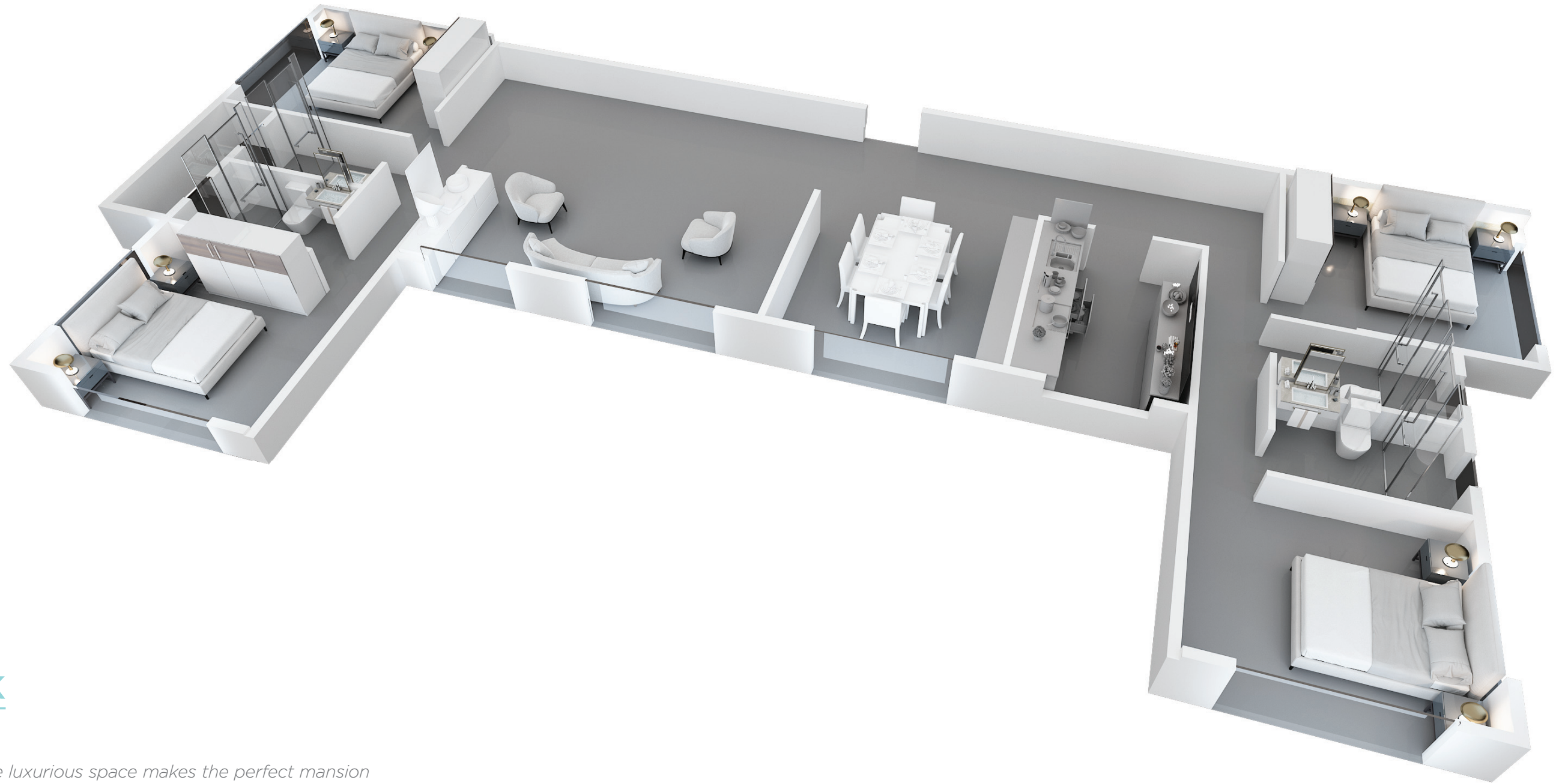


A joyful life
is an
individual
creation

A fun, safe and comfortable place to play and bond with neighbours. Be it a snooker game or a match screening! Even prime time daily soaps perhaps!

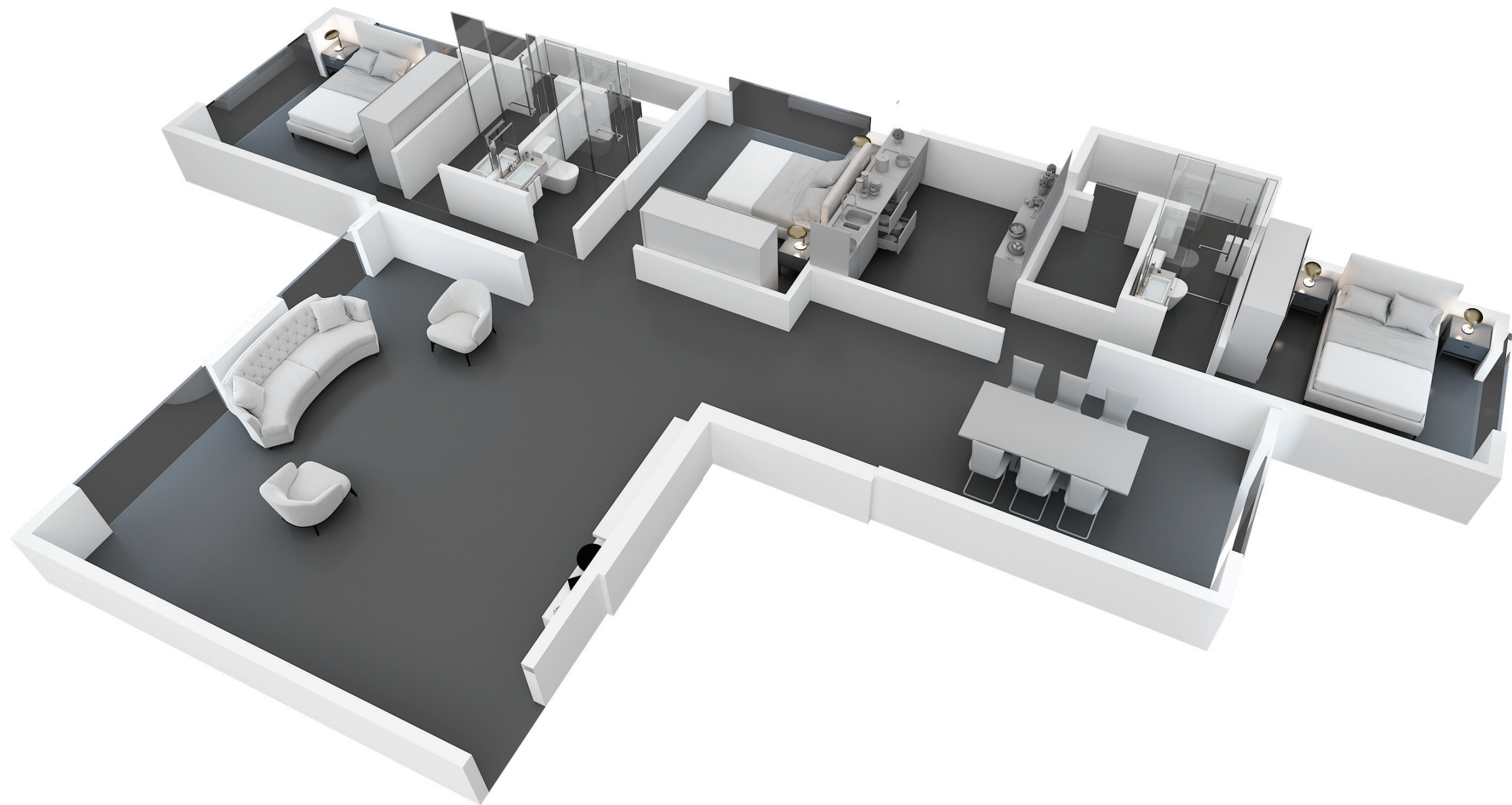
- Snooker Table
- Foosball
- Tv Screen





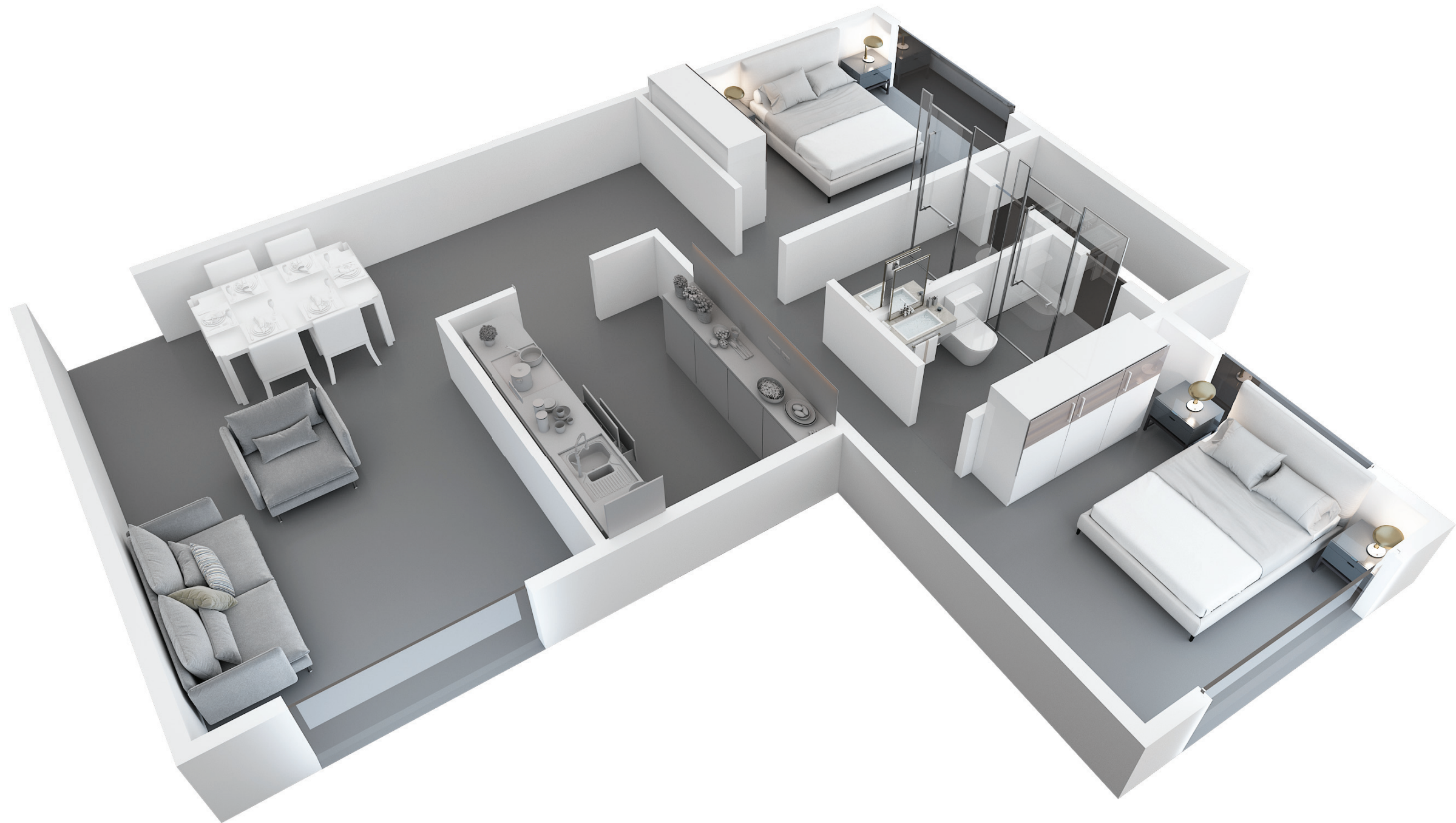
4BHK

This ample luxurious space makes the perfect mansion for your family to live well. Choose from a RERA carpet area of 1611.12 sq. ft, 1664.7 sq. ft or 2167.53 sq. ft. There are no pillars jutting out, a vast canvas for you to decorate your house to tell your story well.



3BHK

3 well-planned bedrooms with modern amenities in a 1324.95 sq. ft RERA carpet area make a perfect home for families to make noise when needed and have their space for study or work needed.



2BHK

Choose from various carpet areas on different floors ranging from 814.61 sq. ft carpet area to 684.27 sq. ft. Optimized space to suit your needs. Enjoy the comfort of owning a cozy house in the heart of the city.

There's a home for everyone,
be it a 1,2,3 or 4BHK.

| 1 & 2 BHK VARIATION | | | |
|---------------------|--------------|-------------|----------------|
| Sr. No. | Flat No. | Carpet Area | RERA Area (5%) |
| 1. | 1104 (1BHK) | 472.75 | 496.39 |
| 2. | 1204 (1BHK) | 472.75 | 496.39 |
| 3. | 1404 (1BHK) | 472.75 | 496.39 |
| 4. | 1504 (1BHK) | 471.25 | 494.81 |
| 5. | 603 (2BHK) | 867.82 | 911.22 |
| 6. | 601 (2BHK+T) | 983.08 | 1032.23 |
| 7. | 1003 (2BHK) | 756.49 | 794.31 |
| 8. | 1103 (2BHK) | 786.96 | 826.31 |
| 9. | 1203 (2BHK) | 786.96 | 826.31 |
| 10. | 1202 (2BHK) | 792.45 | 832.07 |
| 11. | 1303 (2BHK) | 786.96 | 826.31 |
| 12. | 1304 (1BHK) | 472.38 | 496.39 |
| 13. | 1401 (2BHK) | 707.73 | 743.12 |
| 14. | 1801 (2BHK) | 719.47 | 755.44 |
| 15. | 1802 (2BHK) | 818.17 | 859.08 |

| 3 & 4 BHK VARIATION | | | |
|---------------------|-----------------------|-------------|----------------|
| Sr. No. | Flat No. | Carpet Area | RERA Area (5%) |
| 16. | 1303/1304 (3BHK) | 1259.71 | 1322.70 |
| 17. | 1203/1204 (3BHK) | 1537.64 | 1614.52 |
| 18. | 1103/1104 (3BHK) | 1259.71 | 1322.70 |
| 19. | 1202/1203 (4BHK) | 1579.41 | 1658.38 |
| 20. | 1202/1203/1204 (4BHK) | 2052.16 | 2154.77 |
| 21. | 1801/1802 (4BHK) | 1537.64 | 1614.52 |

Just around the corner

Key Highlights & Features

- Acquired full Commencement Certificate
- 4 Floors for Podium Ramp Parking
- 11ft Ceiling Height
- Jain Temple, Hindu Temple, Ayyappa Temple
- Matunga Railway Station
- Easy connectivity to Western Express Highway
- Eastern Express Highway
- Dadar Circle
- Tulsi Pipe Road

- Banks
- Resturant
- ✚ Hospital
- ▲ Petrol pump
- ⬢ Post office
- ▴ Temple
- ▢ Railway station
- ▤ Railway station



Talk to us to get your smart home space reserved.

Call: 8898 6666 55 | e-mail: sales@arthrealty.com



Site address: Dadbhawala Sadan Building, 384, Telang Cross Road, Matunga (E), Mumbai - 19

Rera registration number : P51900020051